



SERVICE PARTS LIST

BULLETIN NO.
54-40-8220

SPECIFY CATALOG NO. AND SERIAL NO. WHEN ORDERING PARTS		REVISED BULLETIN	DATE
18 GAUGE SHEAR HEAD ASSEMBLY			Oct. 2019
CATALOG NO. 48-08-0500	STARTING SERIAL NO.	WIRING INSTRUCTION	

EXAMPLE:

00	0
----	---

Component Parts (Small #)
Are Included When Ordering
The Assembly (Large #).

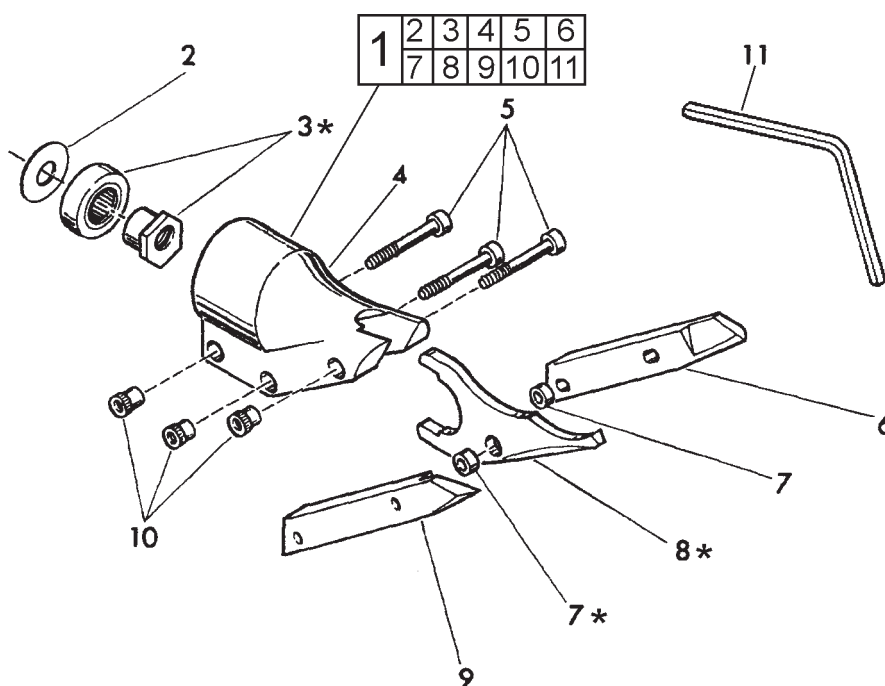
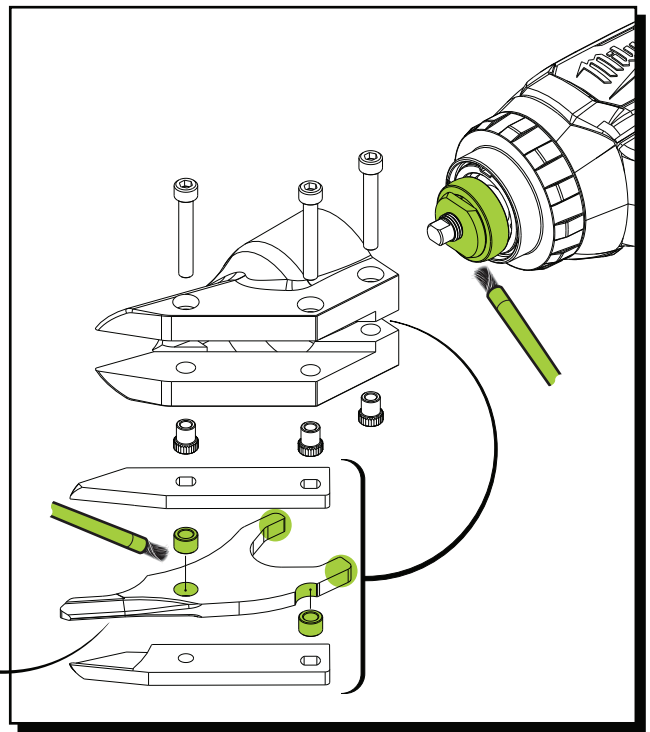
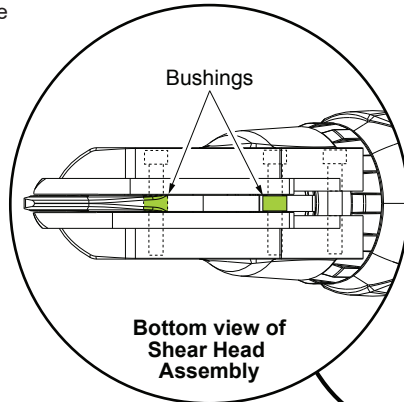


FIG.	PART NO.	DESCRIPTION OF PART	NO. REQ.
1	48-08-0500	Shear Head Assy. (Includes 2 thru 11)	(1)
2	06-75-2115	10-24 x 1-1/4 Skt. Hd. Cap Screw	(3)
3	43-76-0400	Shear Housing	(1)
4	45-88-7310	Washer	(1)
5	43-16-0100	Eccentric Assembly	(1)
6	43-84-0460	Knurled Insert	(3)
7	48-44-0170	Blade - Right Side	(1)
8	42-40-0520	Bushing	(2)
9	48-44-0150	Blade - Center	(1)
10	48-44-0160	Blade - Left Side	(1)
11	49-96-0070	5/32 Hex Allen Wrench	(1)

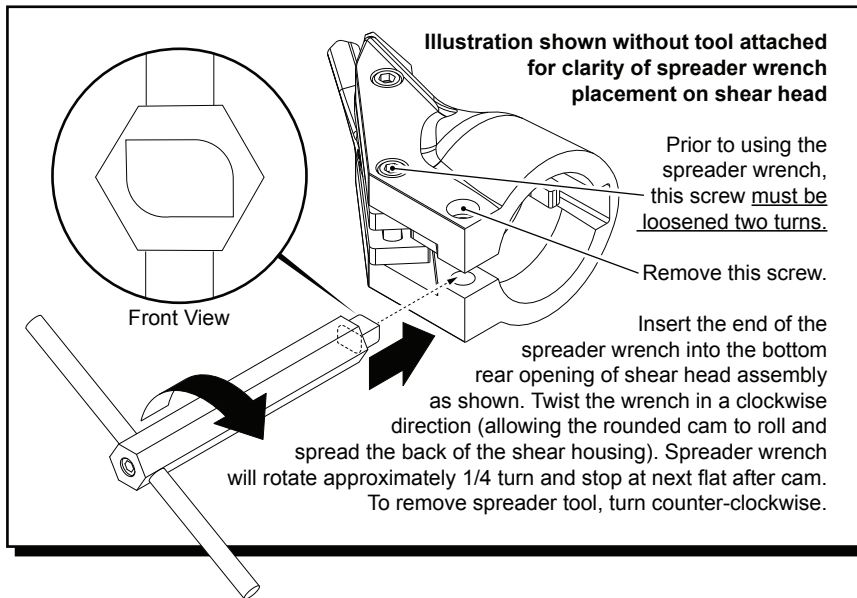
FIG. LUBRICATION:

* 3,7,8 During assembly, use a dab of Type "E" Grease, No. 49-08-4122 to lubricate flats, pivot hole and sides of center blade (8), eccentric assembly (3) and bushing (7).

When servicing **Shear Head Assembly No. 48-08-0500** pay close attention to the placement of the Bushings. One is to be placed in the hole of the Center Blade and is to be held in place with the front most screw on the Shear Housing. The other bushing is to be located below the small concave notch of the Center Blade and is to be secured with the middle screw on the Shear Housing. Prior to assembly, it is recommended to use Type 'E' Grease, No. 49-08-4122 on the following areas: Place a dab of grease in the pivot (bushing) hole and on the bushing notch of the Center Blade. Place a dab of grease on the rear flats of the Center Blade. Coat both bushings completely with grease. Place a liberal amount of grease on the entire Eccentric Assembly.



REMOVING SHEAR HEAD ASSEMBLY FROM TOOL



SERVICE TOOLS:

Spreader Wrench No. 61-30-0300
for 14 Gauge Shear Head 48-08-0505
used on Shear No. 2636-20

for 18 Gauge Shear Head 48-08-0507
used on Shear 2637-20

Spreader Wrench No. 61-30-0310
for 18 Gauge Shear Head 48-08-0500
used on Shears 2635-20 and 6852-20